



# GumRemoval Range



# About Matrix

Established nearly a decade ago, Matrix is now recognised as the UK's leading steam cleaning machine manufacturer with an extensive portfolio of high quality light commercial to industrial 4.5 bar and 8 bar cleaning systems.

With our head office based in Lancashire and a network of over 100 carefully selected trade dealers, we are able to provide a full nationwide distribution service for our steam clean machines supported by a thorough maintenance service and extensive availability of spare parts.

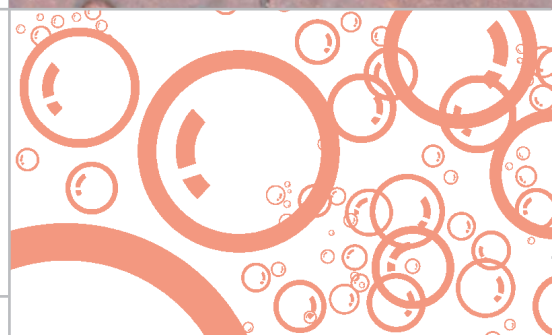
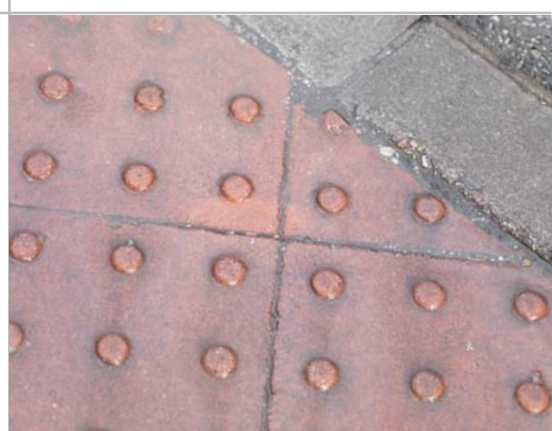
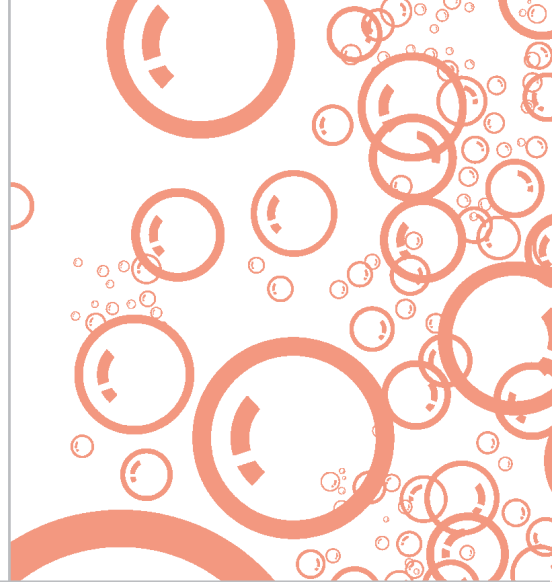
## Gum Removal Range

Chewing gum is a real problem for local authorities, commercial property owners, transport companies and property management companies responsible for the cleanliness and upkeep of buildings, streets or commercial transport.

At Matrix, we have invested significant development time over the last 10 years to come up with economical and efficient solutions to the problem of removing chewing gum which has resulted in a high quality range of specialist cleaning equipment developed with chewing gum removal in mind.

The steam cleaning process for removing chewing gum has never been easier. By simply applying an environmentally friendly cleaning agent through the machine chewing gum is removed effectively leaving a slightly damp surface and no mess. When the gum is preheated with steam, detergent applied and agitated with the brush attached to the steam nozzle the gum is broken down leaving little or no trace on the surface treated.

Using this system to remove chewing gum is very cost effective. One person using only approx 40 litres of water in which can be safely stored on the trolley of our should be able to clean approx 300 square metres with medium pollution in one working day.



# GR8000

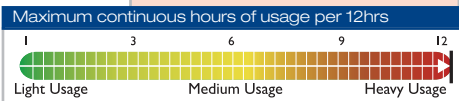


## Gum Removal

The GR8000 is a commercial chewing gum removal system incorporating an (up to) 8 bar pressure steam boiler with an integral chemical delivery system. Made from highly durable stainless steel construction the unit features a continuous fill boiler system allowing refill at any time during operation. This machine is ideally suited for large areas of chewing gum removal i.e. shopping centres, sports stadiums and local authority concerns.

### Accessories Included

- 4m steam only hose
- 2 x extension tubes
- Floor brush
- Triangular brush
- Large brush elbow
- Window squeegee
- Long nozzle
- Curved nozzle
- Detail brush nozzle
- 5 x round nylon brushes
- 5 x round brass brushes
- 55mm round brush



# GR4500

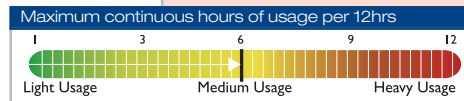


## Gum Removal

The GR4500 is a commercial chewing gum removal system incorporating an (up to) 4.5 bar pressure steam boiler with an integral chemical delivery system. Made from highly durable stainless steel construction the unit features a continuous fill boiler system allowing refill at any time during operation. This machine is ideally suited for smaller areas of chewing gum removal i.e. shopping centres, sports stadiums and local authority concerns.

### Accessories Included

- 4m steam only hose
- 2 x extension tubes
- Floor brush
- Triangular brush
- Large brush elbow
- Window squeegee
- Long nozzle
- Curved nozzle
- Detail brush nozzle
- 5 x round nylon brushes
- 5 x round brass brushes
- 55mm round brush



## Chewing Gum Removal System

Complete Mr Gummy is a completely self-contained chewing gum removal system incorporating a 6 bar pressure steam boiler with an integral chemical delivery system. The unit comes complete with trolley mounted generator and trolley and is made from a highly durable stainless steel construction with a continuous fill boiler, ideally suited for large areas of chewing gum removal. The machine is supplied with a complete set of tools and accessories

# GR9999

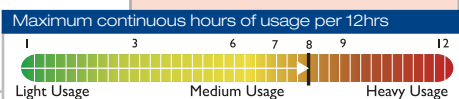


## Gum Removal

Complete Mr Gummy is a completely self-contained chewing gum removal system incorporating a 6 bar pressure steam boiler with an integral chemical delivery system. The unit comes complete with trolley mounted generator and trolley and is made from a highly durable stainless steel construction featuring a continuous fill boiler system allowing refill at any time during operation, ideally suited for large areas of chewing gum removal. The machine is supplied with a complete set of tools and accessories

### Accessories Included

- 4m steam only hose
- 2 x extension tubes
- Floor brush
- Triangular brush
- Large brush elbow
- Window squeegee
- Long nozzle
- Curved nozzle
- Detail brush nozzle
- 5 x round nylon brushes
- 5 x round brass brushes
- 55mm round brush



# GR9500

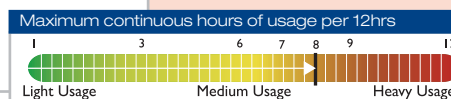


## Gum Removal

Mr Gummy is an commercial/industrial 110 volt chewing gum removal system incorporating a 6 bar pressure steam boiler with an integral chemical delivery system. It is made from a highly durable stainless steel construction featuring a continuous fill boiler system allowing refill at any time during operation, ideally suited for large areas of chewing gum removal. This machine is supplied with a complete set of tools and accessories.

### Accessories Included

- 4m steam only hose
- 2 x extension tubes
- Floor brush
- Triangular brush
- Large brush elbow
- Window squeegee
- Long nozzle
- Curved nozzle
- Detail brush nozzle
- 5 x round nylon brushes
- 5 x round brass brushes
- 55mm round brush



## Gum Removal Range Specification

	<b>GR 4500</b>	<b>GR 8000</b>	<b>GR 9500</b>	<b>GR 9999</b>
Height (cm)	46	74	90	105
Height with Handle (cm)	-	97	-	-
Depth (cm)	42	50	60	115
Depth with Handle & Basket (cm)	-	70	-	-
Width	32	50	49	73
Steam (BAR)	4.5	8	6	6
Vacuum	No	No	No	No
Chemical (Litres)	2.5	5	5	5
Water Reserve (Litres)	5	5	10	10
Boiler Capacity (Litres)	2.2	3.3	5	5
Weight (kg)	14	29	38	125
Voltage	240	240	240	240
Power Cable Length (M)	10	10	3	3

